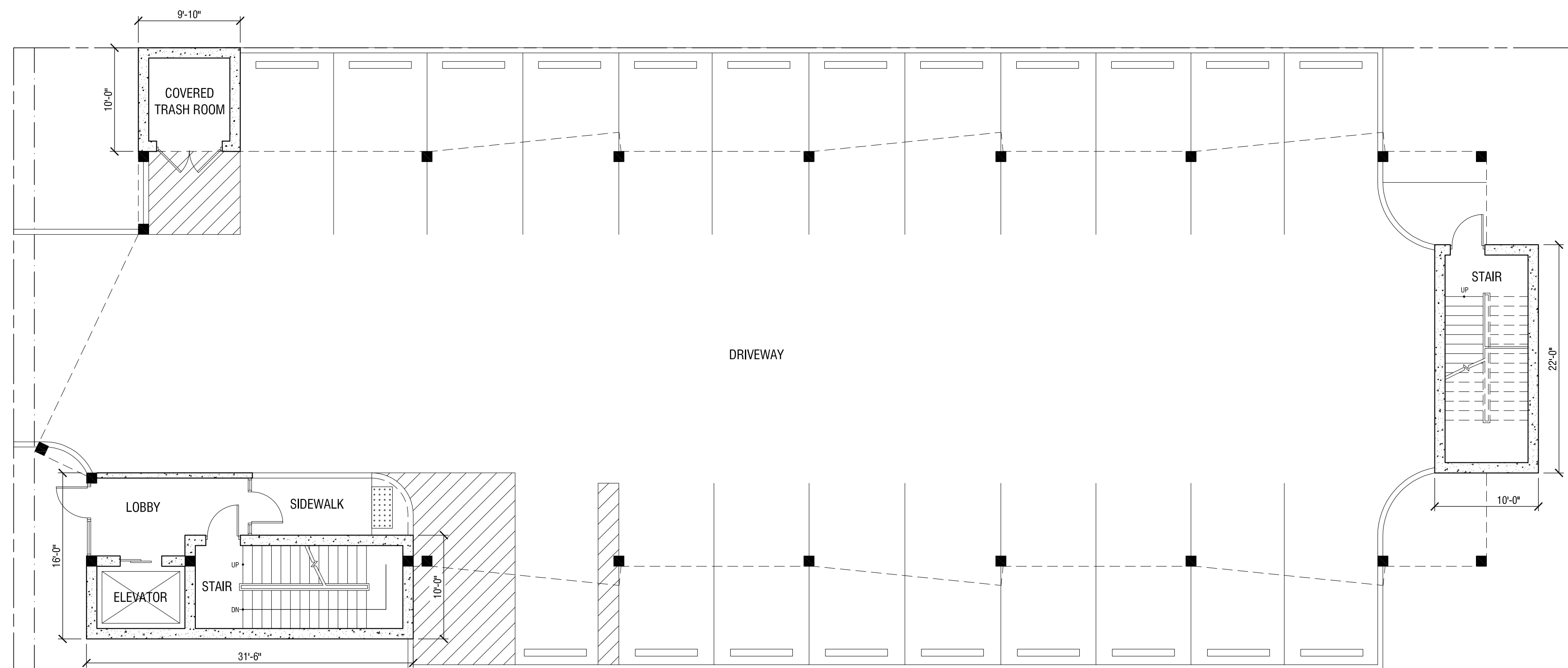


PROPOSED BASEMENT PLAN

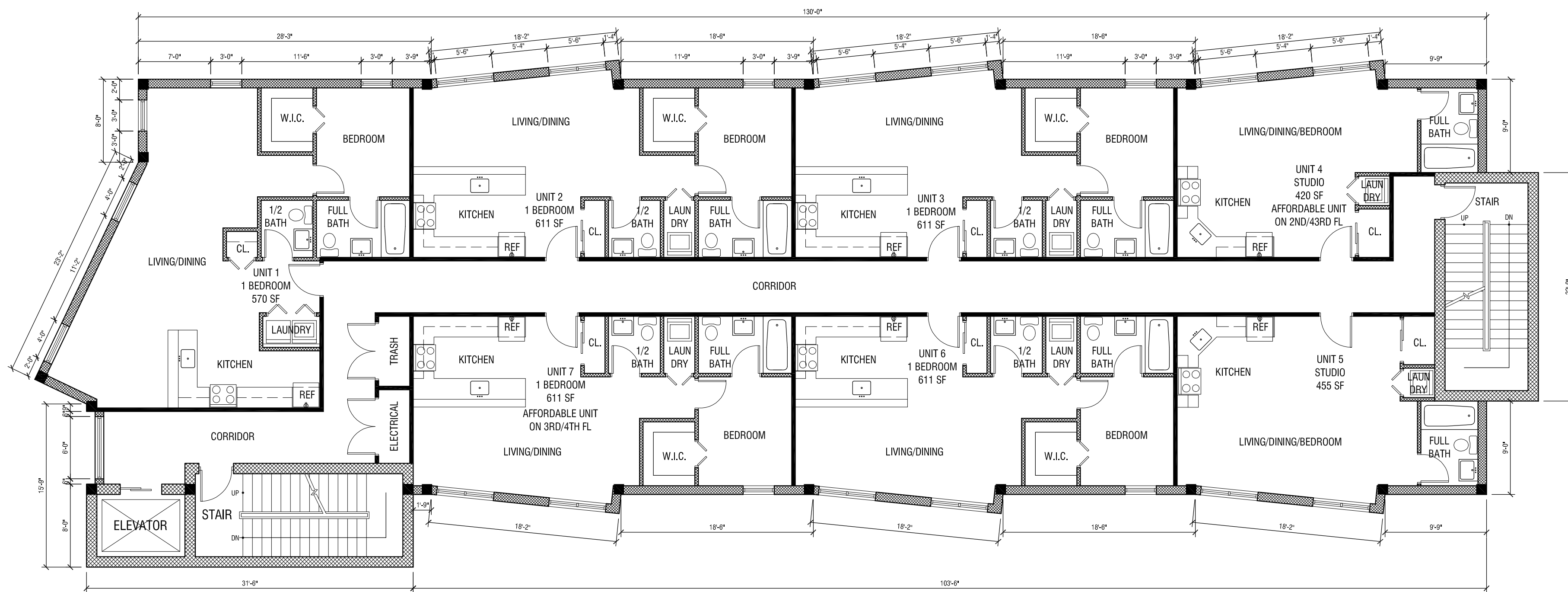
SCALE @ 1/8" = 1'-0"



PROPOSED GROUND FLOOR PLAN (1st)

SCALE @ 1/8" = 1'-0"

LEGEND	
	PROPOSED PARTITION
	SURFACE MOUNTED LIGHT FIXTURE
	WALL MOUNTED LIGHT FIXTURE
	LIGHT SWITCH
	STANDARD ELECTRICAL OUTLET
	220V DEDICATED OUTLET
	SPACE NUMBER
	DOOR NUMBER
	SECTION CUT LINE
	EMERGENCY HORN & STROBE
	EMERGENCY PULL STATION
	EMERGENCY EXIT LIGHT SIGN
	FIRE EXTINGUISHER
	SPRINKLER HEAD
	COMBINATION SMOKE DETECTOR AND CARBON MONOXIDE DETECTOR CONNECTED TO FIRE ALARM PANEL
	SMOKE C.O.



PROPOSED TYPICAL FLOOR PLAN (2nd, 3rd, 4th)

SCALE @ 1/8" = 1'-0"

2nd FLOOR:	7 UNITS	
3rd FLOOR:	7 UNITS	
4th FLOOR:	7 UNITS	AFFORDABLE UNITS
PENTHOUSE:	2 UNITS	23X, 15=3, 45=4
TOTAL UNITS:	23 UNITS	TOTAL AFF. UNITS: 4 UNITS

No. Date Revision Copyright © 2021 Robert Zaccone & Associates, P.C.	N.Y.S. Lic. No. 13829 N.J.S. Lic. No. C-7391	 ROBERT ZACCONE & ASSOCIATES, P.C. Architecture • Planning • Interior Space Design Robert M. Zaccone, A.I.A. Architect 212 WHITE AVE. OLD TAPPAN, N.J. 07675 201-767-9575	Project PROPOSED RESIDENTIAL APARTMENTS 131 FORT LEE ROAD LEONIA, NJ	Project No. _____ Date 07-22-2021 Scale 1/8" = 1'-0" Drawn By S.T. Checked By R.Z.
			Title PROPOSED GROUND FLOOR PLAN PROPOSED TYPICAL FLOOR PLAN	Drawing No. A-2