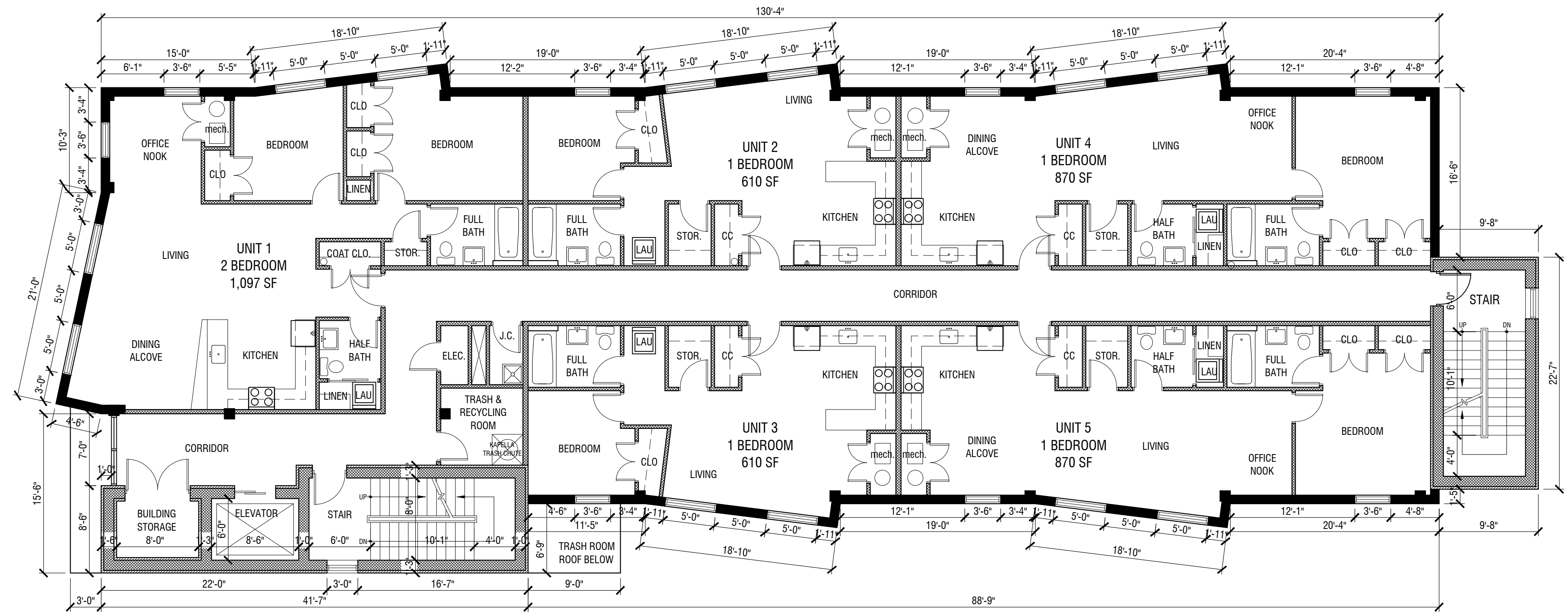


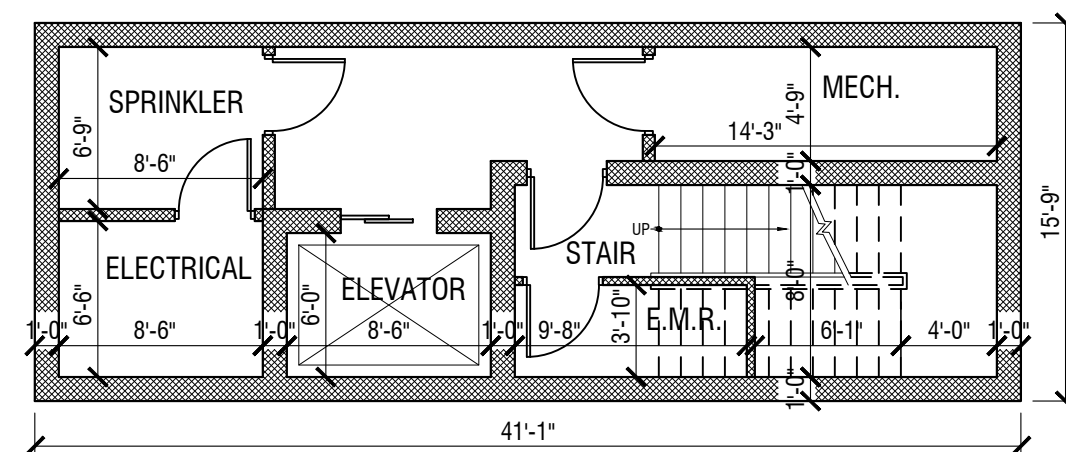
LEGEND	
	PROPOSED PARTITION
	SURFACE MOUNTED LIGHT FIXTURE
	WALL MOUNTED LIGHT FIXTURE
	LIGHT SWITCH
	STANDARD ELECTRICAL OUTLET
	220V DEDICATED OUTLET
	SPACE NUMBER
	DOOR NUMBER
	SECTION CUT LINE
	EMERGENCY HORN & STROBE
	EMERGENCY PULL STATION
	EMERGENCY EXIT LIGHT SIGN
	FIRE EXTINGUISHER
	SPRINKLER HEAD
	COMBINATION SMOKE DETECTOR AND CARBON MONOXIDE DETECTOR CONNECTED TO FIRE ALARM PANEL
	SMOKE C.O.



**PROPOSED SECOND FLOOR PLAN (2nd)**

SCALE @ 1/8" = 1'-0"

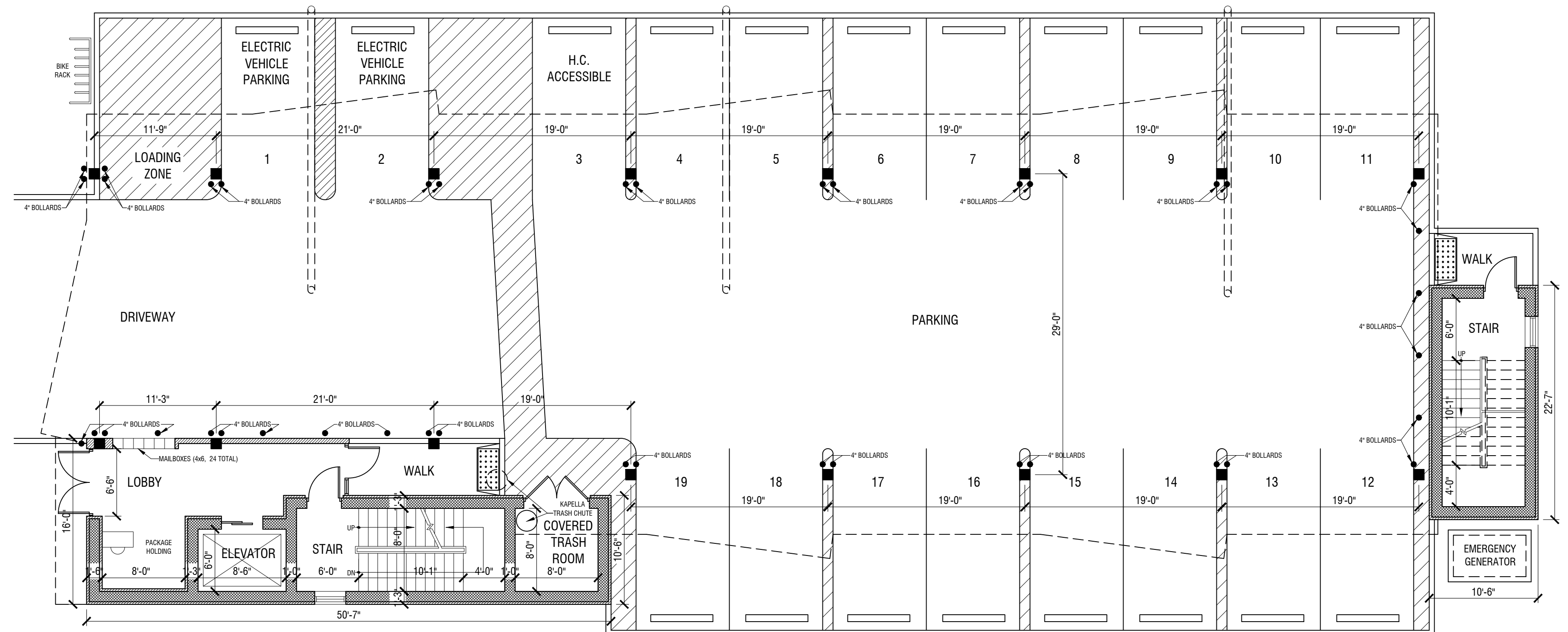
2nd FLOOR - 5 UNITS  
 (1) 2 BEDROOM UNIT: 1,097 SF  
 (2) 1 BEDROOM UNITS: 870 SF  
 (2) 1 BEDROOM UNITS: 610 SF



**PROPOSED BASEMENT PLAN**

SCALE @ 1/8" = 1'-0"

BASEMENT  
 ELEVATOR MACHINE ROOM  
 ELECTRICAL  
 SPRINKLER  
 MECHANICAL



**PROPOSED GROUND FLOOR PLAN (1st)**

SCALE @ 1/8" = 1'-0"

GROUND FLOOR  
 PARKING FOR 19 CARS (1 H.C, 2 EV CHARGE)  
 LOBBY  
 MAILBOXES & PACKAGE HOLDING  
 TRASH ROOM  
 BIKE STORAGE

No.    Date    Revision Copyright © 2022 Robert Zaccone & Associates, P.C.		N.Y.S. Lic. No. 13829 N.J.S. Lic. No. C-7391		 <b>ROBERT ZACCONE &amp; ASSOCIATES, P.C.</b> Architecture • Planning • Interior Space Design Robert M. Zaccone, A.I.A. Architect 212 WHITE AVE.    OLD TAPPAN, N.J. 07675 201-767-9575		Project <b>PROPOSED RESIDENTIAL APARTMENTS</b> <b>131 FORT LEE ROAD</b> <b>LEONIA, NJ</b>		Project No. Date Scale 1/8" = 1'-0" Checked By R.Z.	Date 01-10-2022 Drawn By S.T. Checked By R.Z.
Title <b>PROPOSED GROUND FLOOR PLAN</b> <b>PROPOSED SECOND FLOOR PLAN</b> <b>PROPOSED BASEMENT FLOOR PLAN</b>						Drawing No. <b>A-1</b>			