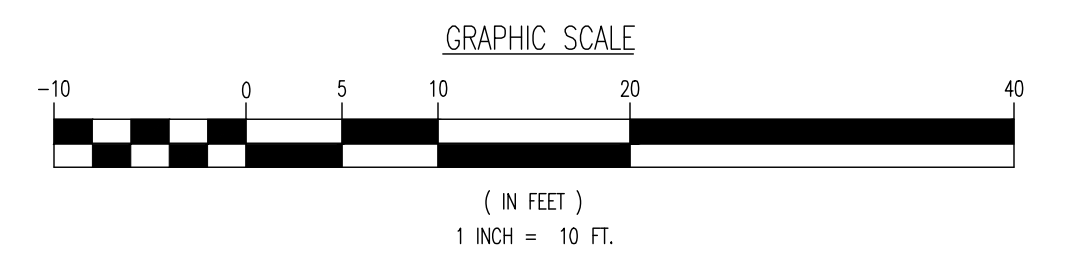
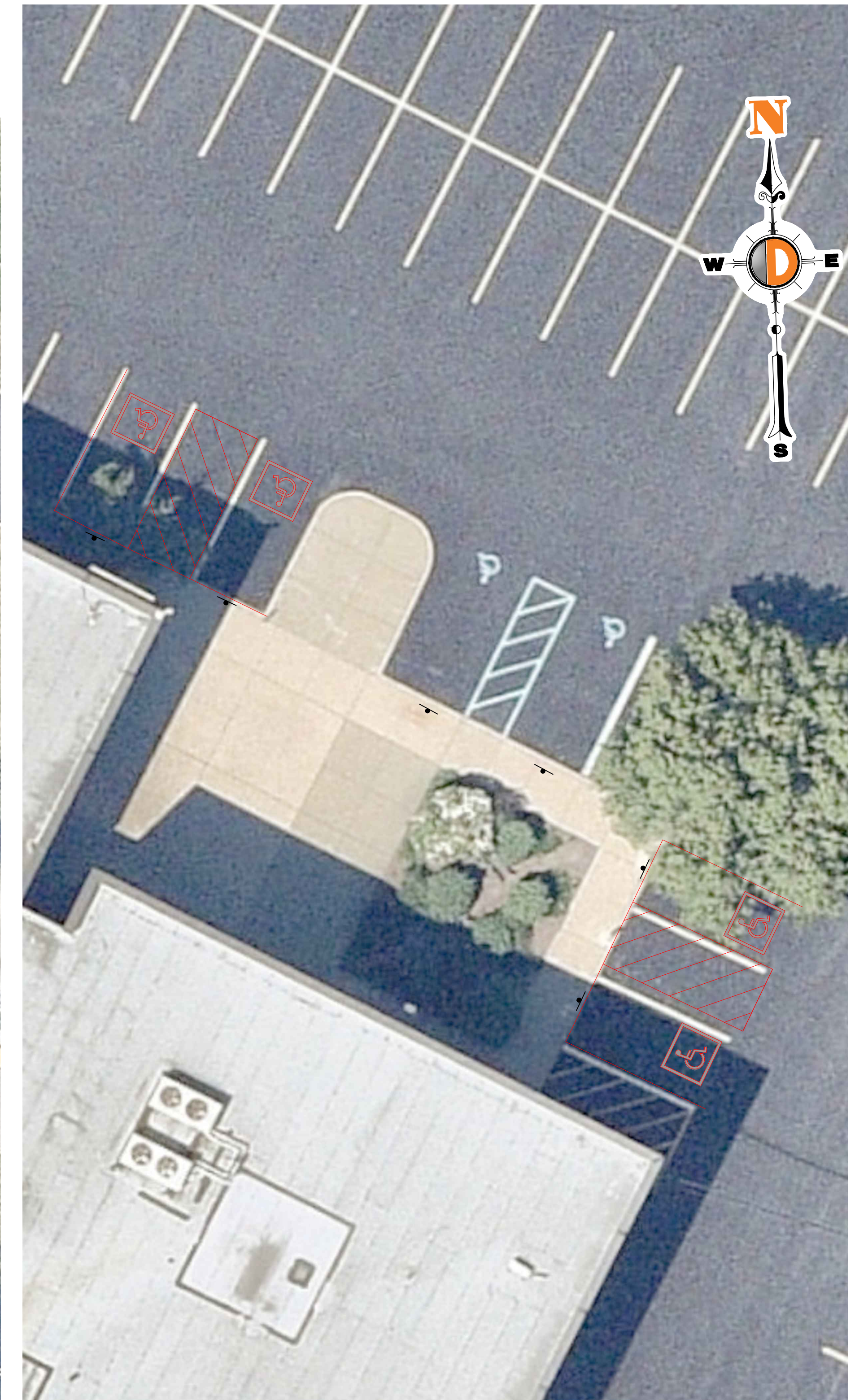
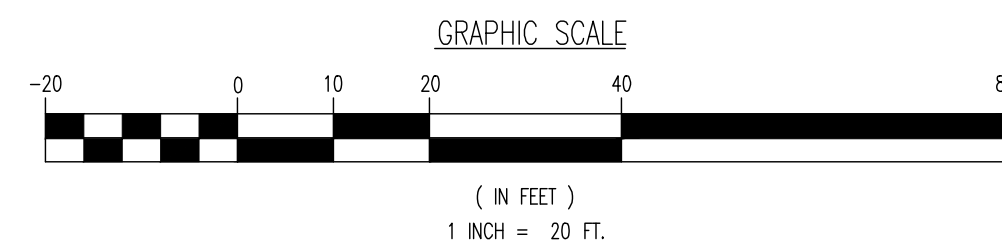
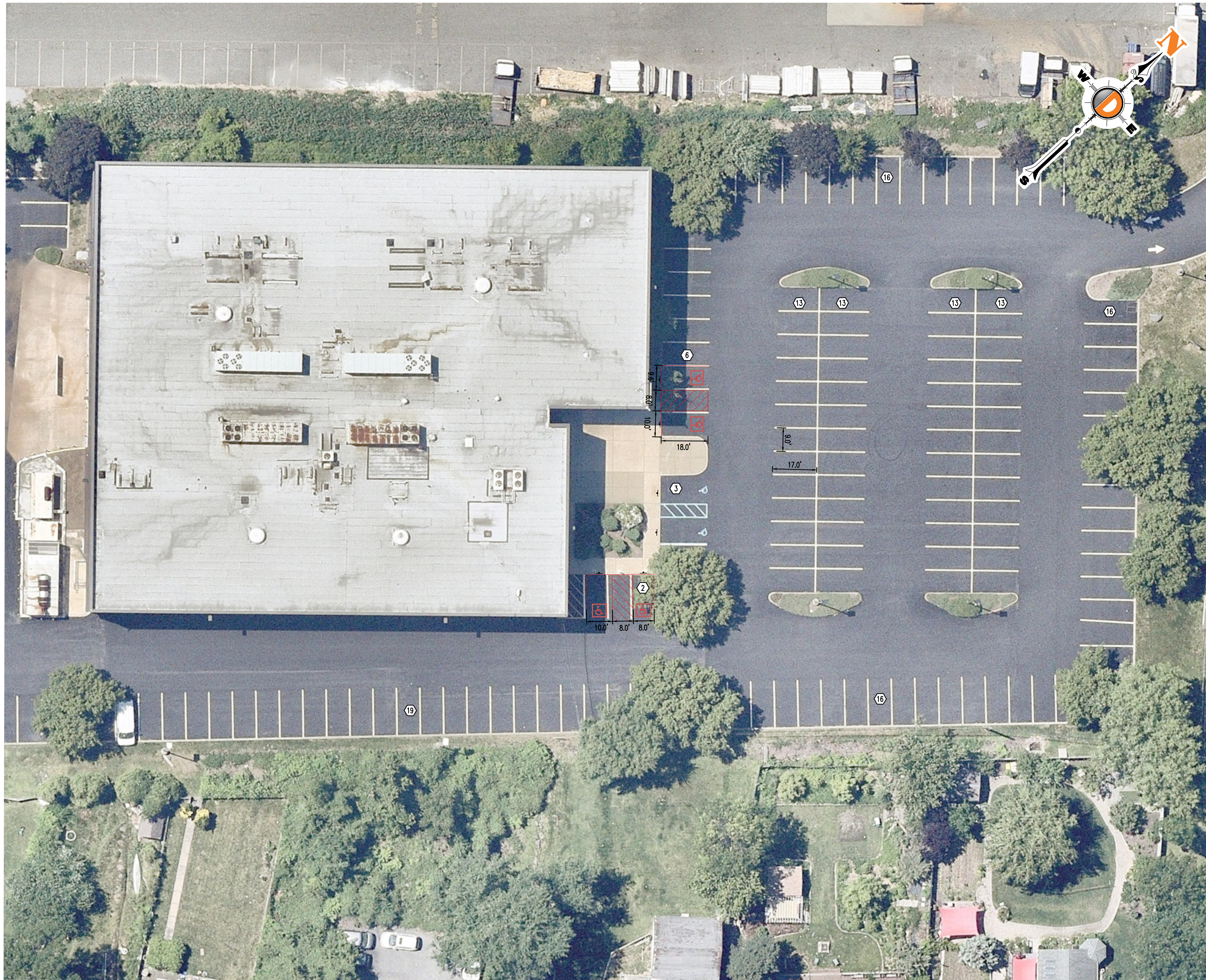


Plotted: 07/21/23 - 3:56 PM, By: abouammou, Product Ver: 24.2a (LMS Tech)
 File: T:\TRAFFIC PROJECTS\4671 Reuten Associates\23-00342 Leonia\Draw\Concept\Exhibits\2023-07-21 Aerial Layout Plan\2023-07-21 Aerial Parking Layout Plan.dwg, ---> SSM - 24x36 H Standard Titleblock



| | | |
|--|--|---|
| <p>TRAFFIC IMPACT STUDIES • ACCESS PERMITTING • HIGHWAY & INTERSECTION DESIGN • TRAFFIC SIGNAL & ELECTRICAL DESIGN</p> <p>1904 Main Street Lake Como, NJ 07719 T: 732.681.0760 F: 732.681.0760 www.dynamictraffic.com</p> <p>Offices conveniently located in: Lake Como, New Jersey T: 732.681.0760 Chester, New Jersey T: 732.681.0760 Township, New Jersey T: 732.681.0760 Tomp, New Jersey T: 732.681.0760 Bethlehem, Pennsylvania T: 445.202.5400 Newtown, Pennsylvania T: 445.202.5400 Philadelphia, Pennsylvania T: 445.202.5400</p> | | <p>1904 Main Street Lake Como, NJ 07719 T: 732.681.0760 F: 732.681.0760 www.dynamictraffic.com</p> <p>New Jersey Certificate of Authorization No. 122045417</p> |
| <p>TITLE: PARKING LOT LAYOUT PLAN</p> | | |
| <p>PROJECT: REUTEN ASSOCIATES PROPOSED ADULT DAY CARE</p> <p>BLOCK: 50.3, LOT 2 2 CHRISTIE HEIGHTS STREET BOROUGH OF LEONIA, BERGEN COUNTY, NEW JERSEY</p> | <p>JOB No: 4671-23-00342 DATE: 07/21/2023</p> <p>DRAWN BY: SQB SCALE: (H) AS SHOWN (V) SHOWN</p> <p>DESIGNED BY: SQB SHEET No:</p> <p>CHECKED BY: LLL CHECKED BY: -</p> | |
| <p>LOU LUGLIO PROFESSIONAL ENGINEER NEW JERSEY LICENSE No. 39407</p> | <p>NICK VERDERESE PROFESSIONAL ENGINEER NEW JERSEY LICENSE No. 38991</p> | <p>01 OF 01</p> <p>Rev. # 0</p> |